

SAFETY RAIL 2000 GUARDRAIL SYSTEM



Counterweighted / No Drilling / No Holes / No Leaks / No Problem

Safety Rail 2000 is a counterweighted, non-penetrating, guardrail system that is easy to work with, quick to install, and satisfies numerous different requirements qualifying it as temporary or permanent hand-railing. It is available in powder-coated yellow, galvanized, or custom colours. SR2000 comes in standard lengths of 5', 7.5' and 10'. We can assist our customers by helping with layouts, specifying the correct materials, and recommending materials for the best value. We also work with our crews to provide full turn-key installations. Safety Rail 2000 is the choice of numerous Fortune 500 companies. We have safe installation procedures that our crews and customers can follow to minimize exposure to the roof edge or fall hazard. Safety Rail 2000 is fully compatible with our Perma-Line warning line system and Kwik-Rail modular fittings. It can also be used along with our custom rooftop crossover stairs or our HatchGuard guardrail.



Features - Fast Installation / OBC Compliant / Modular

- Modular design
- No roof penetration, counterweighted design
- Yellow, Galvanized, or custom colours
- Safe installation procedure
- Meets & Exceeds OSHA and Canadian codes
- Rails can be used with other products including Perma-Line, Kwik-Rail, Para-Rails, Stealth-Rail, Ladder Safety Gates, and other items for rooftop protection
- Fibreglass guardrails available as an option
- Move to other roof locations using EZ Mover cart



Standard Rail Lengths:
LP, 3', 3.5', 4', 5', 7.5', 10'



EZ Mover Cart

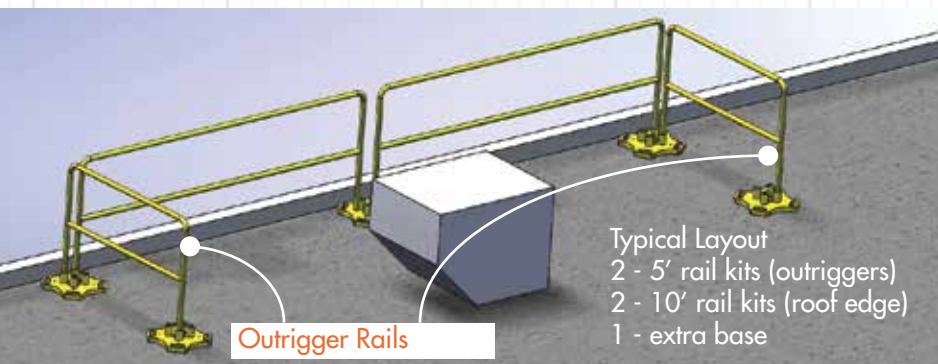
108 lb base

Meets numerous codes - OBC, OSHA, TSSA, Industrial & Construction Regulations

Safety Rail 2000 meets and exceeds numerous USA and Canadian (and provincial) codes, including; OBC, OH&SA, Alberta OHS, WorkSafeBC, TSSA requirements, OSHA, CAL OSHA, when it is installed as per the installation instructions and local requirements. Documentation can be provided upon request. Toeboards and tamper-proof fasteners are required for TSSA projects. Safety Rail 2000 must be set up with an 'outrigger' return rail at both ends of a run. The run can be 10', 100', or 1,000' in length and the outrigger rail is required at both ends of the run.

Description	Yellow	Galvanized
5' Rail Kit	SRY009	SRG009
7.5' Rail Kit	SRY011	SRG011
10' Rail Kit	SRY012	SRG012
Extra Base	SRY014	SRG014

Each rail kit includes 1 - length of rail, 1 - base, and 2 - pins



Typical Layout
2 - 5' rail kits (outriggers)
2 - 10' rail kits (roof edge)
1 - extra base

Outrigger Rails



Skylights and Roof Hatches

Skylights and roof hatches are often overlooked hazards on a roof. Skylights typically aren't rated to withstand the force of a fall, and skylights along with roof hatches are often viewed as an opening in the roof and a fall hazard by regulatory officials. Safety Rail 2000 is a simple and customizable solution to fit a wide range of hatch or skylight sizes. Installation is fast and they do not impede the light through the skylights. The Roof-Hatch kits come with a safety gate.



Guardrails for skylights



Roof hatch protection with gate

Para-Rails

The Para-Rail is the perfect solution when obstructions do not allow use of the standard Safety Rail 2000 rail kits. It is also great for when a user needs to get right to the roof edge to bring materials to the roof. Each Para-Rail is custom-made to suit the customer's requirements. The typical 'bump-out' size is 20"-30", and they are available in standard lengths from 4'-10' along with basically any length required in that size range.



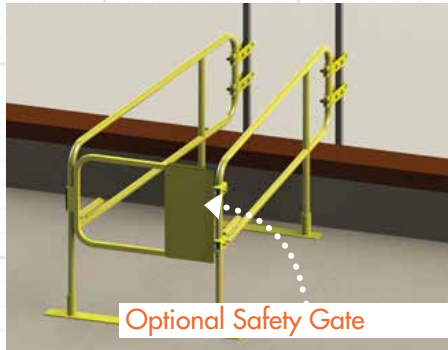
Para-Rail around RTU



Material handling at roof edge

Ladder Defender

The Ladder Defender is a cost effective product for providing a controlled zone to an access ladder. It allows you safe egress/ingress to and from the ladder further onto the roof area. The unique design incorporates a finishing rail which allows the system to span a parapet wall. The rails attach to the ladder on one end and use adjustable width bases for support. It is available in different lengths including 5', 7.5', and 10' lengths, with brackets available to fit flat-bar, angle iron, or tubular ladders.



Optional Safety Gate



Kwik-Rail Wall Connection

No two rooftop applications are ever the same. Kwik-Rail fittings used with Safety Rail 2000 allow us to safely install rails in areas where it is not possible to install outrigger lengths at the ends of a run. The Kwik-Rail fittings are the same size as the rail, 1.66" OD, and can be installed into many different types of walls. They are typically used along with adhesive anchors for attachment. Please consult your local engineer to verify proper attachment.



Kwik-Rail connectors

Storage Carts for Temporary Use

Safety Rail 2000 meets many different codes for temporary guardrailing. Some most common uses for temporary use include; solar panel installation, open pit work, new building construction, as well as many other custom uses. The EZ Mover allows for a quick, safe, and easy installation. Our custom portable trailers allow our customers to have complete sets of equipment ready to be towed to site as soon as required and materials are stored on trailer when not in use.



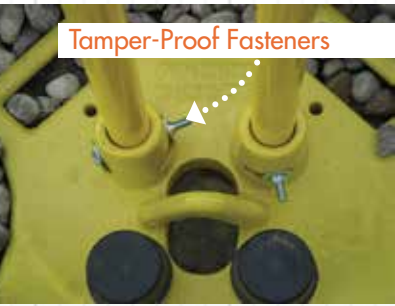
Storage Trailer System



RTC-2000 Storage Cart

Safety Rail 2000 is the best solution for TSSA variances

In the roof safety industry, the TSSA will often raise concerns with a customer over two main issues including: gas fired appliance on roof, and elevator access walkways. If a gas fired appliance is within 6' of the roof edge and it is identified as a hazard by the TSSA the customer typically has two options available to make access to the appliance safer. Option one is to move the unit further away from the roof edge. Opening a roof, re-routing services, new ducting, and other work required to relocate an RTU can be very costly. Option two is to file for a 'variance' with the TSSA requesting that the unit not be moved but be protected with guardrailing at the roof edge. This is typically more economical than moving an entire RTU. The TSSA requires a stamped engineered layout drawing to be provided along with the variance application. TSSA variance applications also require toeboards and tamper-proof fasteners for the bases. W.S. Safety can provide you with a stamped engineered layout drawing, supply of materials, and installation if required. The customer/client is responsible for filing for the application with the TSSA. Safety Rail 2000 is a counterweighted guardrail system that does not require any roof penetration for fastening and complies to the OBC and numerous other codes for permanent guardrailing.



Tamper-Proof Fasteners



Toeboards



What are the procedures for a TSSA variance?

1. TSSA identifies a hazard that must be addressed or gas or elevator may be switched off.
2. W.S. Safety provides and supplies an engineered layout drawing for the customer to provide along with their variance application to TSSA.
3. TSSA reviews the application and typically accepts without changes. If any changes are required then the drawing is updated and provided to customer for TSSA to re-review.
4. TSSA accepts the drawing, product, and layout proposed.
5. Guardrails are installed as per the drawing. If any changes are required due to site conditions, then the drawing of record is updated.
6. TSSA inspector inspects site to ensure that installation corresponds to the engineered drawing.
7. Variance process is complete and unit can be safely serviced again.

Description	Yellow	Galvanized
5' Rail Kit	SRY009	SRG009
7.5' Rail Kit	SRY011	SRG011
10' Rail Kit	SRY012	SRG012
Extra Base	SRY014	SRG014
5' Alum. Toeboard	WSTB060	
7.5' Alum. Toeboard	WSTB090	
10' Alum. Toeboard	WSTB120	
Tamper-proof fastener	WSTMPI	
Each rail kit includes 1 - length of rail, 1 - base, and 2 - pins.		



Elevator access walkway